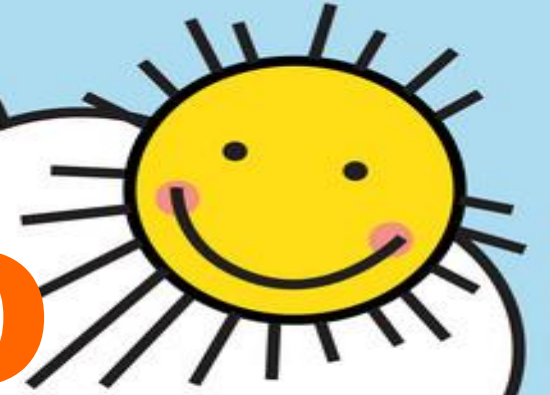




Welcome to

**Al Shoumoukh International
Academy**



What is Al Shoumoukh International Academy?



Al Shoumoukh International Academy is a British Curriculum School established in 2017, to support the community giving the residents of Qatar a choice to educate their children along with strong religious values interlinked with the National curriculum of England.

The school is dedicated to deliver a balanced curriculum, aligned with its core values and ethics. The approach towards learning at Al Shoumoukh is to focus not only on academic excellence but also in helping students develop their character, creativity, values and personal leadership necessary for them to achieve their full potential as global citizens





OUR VISION

To present balanced, responsible, confident and internationally-minded young adults, who are capable of making sound decisions based on logic and morality





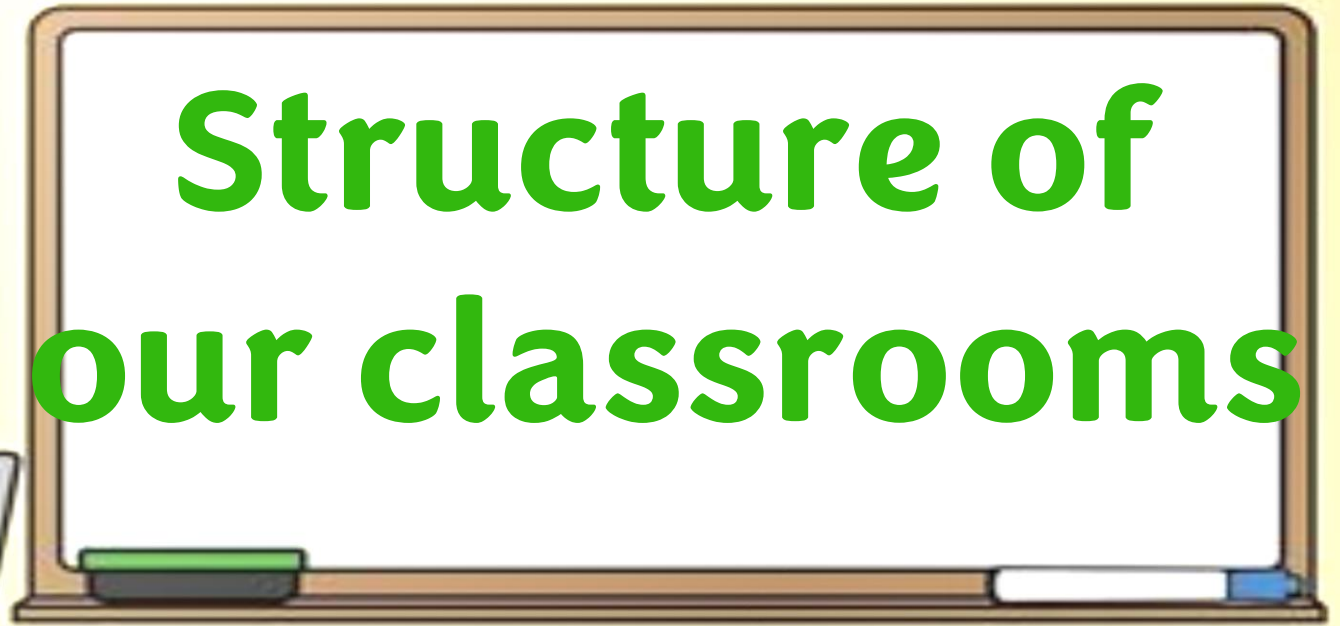
OUR MISSION

Al Shoumoukh International Academy is dedicated to delivering a balanced curriculum, aligned with core values and ethics





Structure of our classrooms

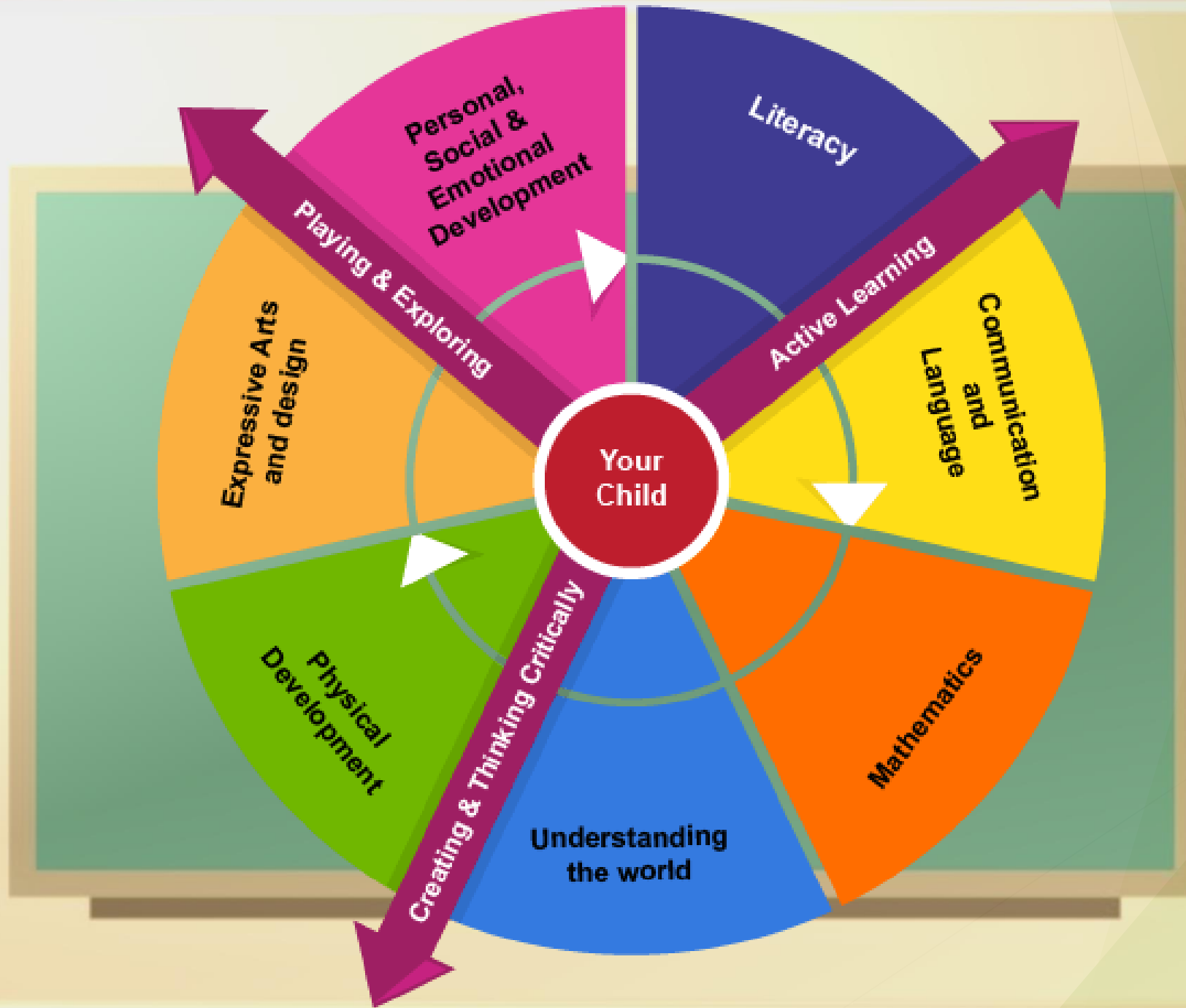




EYFS

Earlier years foundation stage





Your Child

Literacy

Communication and Language

Mathematics

Understanding the world

Physical Development

Expressive Arts and design

Playing & Exploring

Active Learning

Creating & Thinking Critically

Personal, Social & Emotional Development



The Four Guiding Principles of the Early Years Foundation Stage

A Unique Child

Every child is a unique child who is constantly learning and can be resilient, capable, confident and self-assured

Positive Relationships

Children learn to be strong and independent through positive relationships

Enabling Environments

Children learn and develop well in enabling environments in which their experiences respond to their individual needs and there is a strong partnership between practitioners and parents / carers

Learning and Development

Children develop and learn in different ways. The framework covers the education and care of all children in early years provision, including children with special educational needs and disabilities



90%

of a child's brain
development
happens
before age of **5**



- 90 % Brain development before age 5
- 10 % Brain development after age 5



Thank you

