



Health Measures Policy – Covid 19

Table of contents

- 1- A. Introduction
 - B. The rational
- 2- Health and safety team
- 3- General measurements of safety in school.
- 4- Instructions for Staff.
- 5- Instructions for Parents.
- 6- Instructions for Students.
- 7- Isolation room
- 8- Arrangement of the classes.
- 9- Bus Arrangement
- 10- General Procedures.

1. A. Introduction

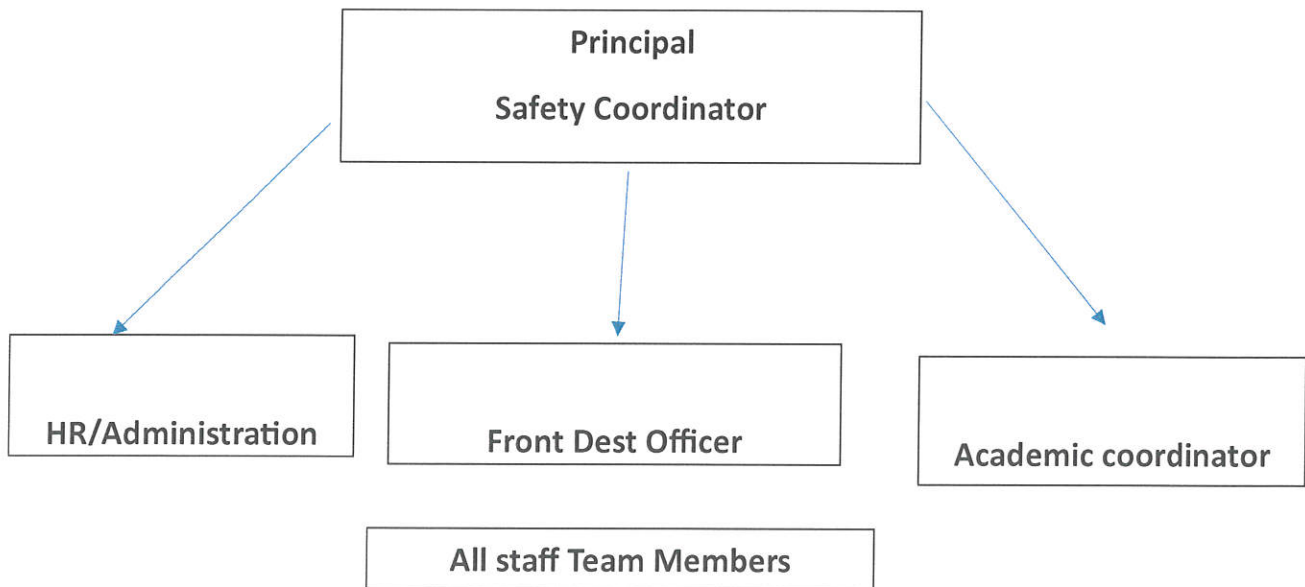
Heading back into school during a pandemic is undoubtedly difficult for everyone - both physically and mentally. With the coronavirus outbreak, parents are anxious about having their children be in close spaces for long hours; younger students may feel confused or even scared, and teachers now have to juggle educating students as well as making sure they're safe and healthy. While you do your best to make sure students are safe, you need to remember to protect yourself at the same time. Here's a checklist of things we think you should keep in mind and implement during classes for your safety and your students. Our priority is to keep everyone safe while not making life more difficult for our parents. We want to reassure that SIA is taking extra precautionary measures regarding the safety and hygiene procedures in the school premises. Since the attendance is mandatory and each student is uniquely different, we understand your concerns about health, safety, distance learning and the importance of face-to-face instructions. However, parents need to work with all of the other unexpected consequences.

B: Rational

Schools play an important role in educating students about disease prevention within their homes and communities. Additionally, many children and adolescents rely on key services provided by schools, such as school meal programs, psychosocial support and outreach for vulnerable populations. This document provides suggestions for safety measures and protocols against COVID-19 transmission in school, describes considerations associated with each measure, so that schools may safely resume and sustain operations. The protocols are presented as practice (**physical distancing, hand hygiene, cleaning and disinfection, and personal hygiene**).

2-Health and safety Team

Al Shoumoukh International Academy has a dedicated team for ensuring health and safety measures in school. In case of any query or emergency please feel free to contact the Health and Safety Team.



3-General measurements of safety in school

3.1- Arrival and departure of students using school transport

- The temperature of the students will be measured and recorded when they board the bus
- Dispersal of students will not be allowed in groups
- The students must board the respective buses maintaining social distancing

3.2- Arrival and departure of students using self-conveyance

- The temperature of the students will be measured at the entrance. Entry is permitted only for those who have less than 38°C
- The parents should wait at the entrance to complete the entry procedure and may leave after ensuring the entry of the child.

3.3- Social Distancing at school

-A safe distance will be maintained among the students and the staff as per the directives of the Ministry of Public Health.

- Appropriate occupancy rate for the purpose of social distancing will be maintained in the school buses, classrooms and in all other areas of the school.

- All the employees and visitors are instructed to wear facemasks
- Frequent use of sanitizer is recommended by the school and adequate number of sanitizing points are installed in the campus

4. Instructions for Staff

4.1- Face Masks

It's important that you wear a face mask during your lessons. Reusable face masks with filters in the fabric may come in handy!

4.2- Keep a safe distance

Social distancing still applies even if you're a teacher! Keep a safe distance from your colleagues and students to protect yourselves and those around you.

4.3- Disinfectant supplies

Make sure that you have hand sanitizer on hand in case you are unable to wash your hands. Anti-bacterial wipes will also be useful to wipe down surfaces as an extra precaution.

4.4- Stay home if you're sick

Even if you have a minor symptom of Coronavirus, it's better to self-isolate to protect your colleagues and students and to recuperate.

4.5- Support student's mental health

It's a difficult time for everyone and the pandemic has taken a harsh mental toll on people around the world. Speak to your students to make sure that they're feeling comfortable too. Encourage them to be open about their anxiety so that you can help them through it.

4.6- Ventilation

Ensure classrooms are properly ventilated so that air is circulated as much as possible.

4.7- Encourage Healthy Eating Habits

Talk to your students about the importance of staying healthy, in all ways. Educate them on foods that are known as immunity boosters and remind them to stay hydrated too!

4.8- Watch out for symptoms

Keep a close eye out for students who exhibit any symptoms of Coronavirus. Whether it's a runny nose, fever or a cough, send those students to the school nurse immediately.

4.9- Hand washing etiquette

Younger students especially will need to be informed well on the importance of washing their hands. Educate them on how long they need to be washing their hands and help them do it adequately.

4.10- Seating arrangement

Do your best to ensure that students are in the same seats for your classes and aren't moving places every day.

4.11- Reinforce safety guidelines

Remind your students about the safety measures put in place and why they should be following them.

Create posters and visuals to place in classrooms and school halls that remind students to practice hygiene.

4.12 - Take care of yourself

While you will be trying to make sure your students are educated and safe, don't forget to take care of your own needs! As we are all under tremendous stress, don't lose sight of hope and do your best to make sure your own needs well.

5- Instructions for Parents:

- a- Parents have to avoid the visit to the school (Except emergencies) and can communicate to the school through other means of communications.
- b- Visitors are instructed to wear facemasks.
- c- The parents should wait at the entrance to complete the entry procedure and may leave after ensuring the entry of the child.
- d- Ehteraz application of all the visitors and parents will be checked and only the green status holders are permitted to enter.
- e- The temperature of everyone entering the campus will be checked.
- f- Parents should make an appointment in advance to visit the school to avoid gathering.

6. Instructions for Students

- a- Students will be sitting at a distance of 1.5 metre from each other
- b- Lunch will be in classroom.
- c- Students are advised to bring their own food, water bottle and personal hygiene materials.
- d- Canteen will not function at school.
- e- Students are strongly instructed not to share any food items.
- f- Kindly send sufficient quantity of water with the children, students are allowed to refill their water bottles in necessary cases.
- g- Students should not share their stationery.

7. Isolation room

- a-The school has arranged isolation room in the campus as per the directions of MOE &HE.
- b- The isolation room contains a bed, sanitizer, thermometer, face shield, gown, head cover, foot cover, glasses, tissues, gloves etc
- c- In case of any symptoms the student will be isolated at the earliest and the same will be informed to the parent and to the hotline number of MOPH.
- d -A record of students with chronic illness is maintained at school to refer in case of emergency.

8. Arrangement of the classes

- a- The school ensures sanitization and cleaning all classrooms and other areas of the school.
- b- The school has rearranged the students' seats to ensure the social distancing inside the classroom.
- c- ~~No group activity, all activities should be individual~~
- d- Sport activities will be held in the classroom

9- Bus Arrangements

Parents should check the temperature of their children before they board the bus. In buses the social distancing protocol will be followed, if there are 3 seats in a row only 1 child will be seated. Siblings are allowed to sit next to each other.

10- General Procedures

a. Procedures in the case of a suspected case among staff or students

- Staff should call 1600 to get an advice on further steps.
- Students should seek advice from their health team in the first instance.
- If the staff or student member is still at home, they should stay there until they have obtained medical advice.
- The school will contact the parents directly.

b. Procedures in the event of a confirmed case among staff or students

- The ministry of health will inform the school about any confirmed cases.
- It is highly unlikely that all of a building(s) will need to be closed but some people may be displaced temporarily while cleaning and decontamination processes take place.
- Staff will be offered working from home or alternative desk space in the campus if possible.

c- Exceptional cases

- Students with chronic diseases and continuous medication are exempted from the regular classes.
- Medical certificate from their doctor must be submitted and prior permission must be obtained from the school.
- In case of any chronic diseases / symptoms of any severe diseases for any family members, the students are exempted from regular classes.
- Students, who require medical attention during school hours, may bring it to the knowledge of the Class Teacher.

Your safety is our priority